



NAVIS

LONG RANGE WIRELESS WIND LOGGER WL 11, WL 11X

FEATURES

- easy-to-use solution for wind site evaluation
- shows and store all vital wind data
- range up to 250 m (1200 m at WL11X model)
- easy installation without running cables
- replaceable anemometer cups
- up to 4 years sensor battery life

FUNCTIONS

show on LCD

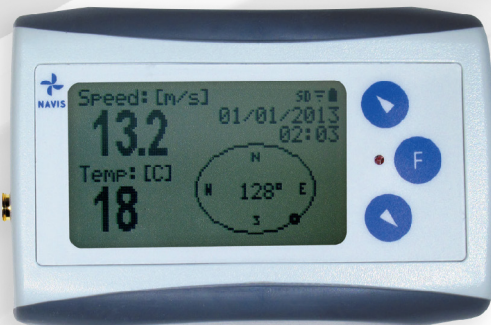
- current wind speed
- temperature
- wind direction (option)
- 24h wind speed and temperature history graphs
- 7 days history of instant and average wind speed
- date and time

store to SD card

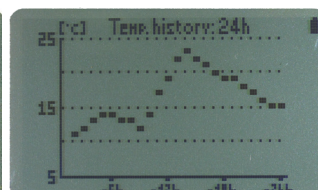
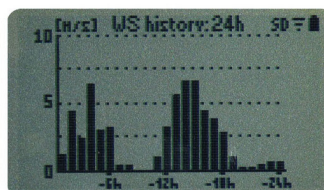
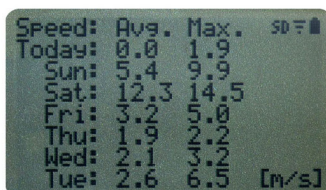
- average and maximum wind speed in selected interval
- temperature
- average wind direction (option)
- each data has date and time stamp



range up to
250 (1200) m



HISTORY DISPLAYS





NAVIS

Models, standard range:



WL 11/WS



WL 11/WSD

Models, extended range:



WL 11X/WS



WL 11X/WSD

OPTIONS

Wind tunnel certificated version available

Sensor with 50 Ohm output for connecting the external antenna (SMA connector)

SENSOR MOUNTING ACCESSORIES

Self levelling mounting assembly

Magnetic mounting assembly

Magnetic self levelling mounting assembly

1

RECEIVER ACCESSORIES

External antenna with 4 m cable, magnetic mounting

2

YAGI antenna

3

SPARE PARTS

Spare anemometer cups

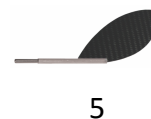
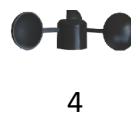
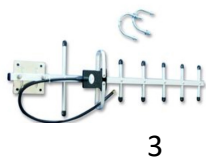
4

Spare wind vane

5

Spare sensors

6





NAVIS

TECHNICAL DATA

Logging:	average and maximum wind speed, wind direction, temperature
Logging interval:	selectable: 10 s, 1 min, 10 min, 60 min
Data recording:	up to 12 months, .txt data format
Memory card:	micro SD (4Gb enclosed)
Wind speed measurement range:	0,6...50 m/s
Wind direction measurement range:	0°– 359°, no blank sector
Temperature measurement range:	-40....+60 °C
Wind speed units:	m/s, km/h, knots, mph
Temperature units:	°C, °F
Wind speed resolution:	0,1 m/s
Wind direction resolution:	1°
Temperature resolution:	1°C
Wind speed accuracy:	+/- 3%, calibration possible in 0,5% steps
Wind direction accuracy:	+/- 2,5°, adjustable offset +/- 180°
Temperature accuracy:	+/- 1°C, calibration possible in 0,5 °C steps
Communication frequency :	868 MHZ, optionally 908 Mhz
Data transmitting:	every 2 seconds
Range:	type WL 11 , up to 250 m visible distance type WL 11X , up to 1200 m visible distance (3-5km with Yagi antenna)
Battery, sensor:	1 x 3,6 V AA Lithium battery (included), replaceable
Battery, receiver:	2 x 1,5 V AA battery (not included)
Battery life, sensor:	up to 4 years (up to 3 years at WL 11X model)
Battery life, receiver:	up to 12 months
Sensor bearings:	2 x precision stainless steel Ball bearing
Casing receiver:	ABS, 94 x 63 x 28 mm
Material - sensor housing:	Anodized Aluminium, PVC
- cups (replaceable):	PA (Polyamide)
- vane (replaceable):	Carbon
Dimensions - WS sensor:	Height 210 mm, overall diameter cup to cup 120 mm
Dimensions - WSD sensor:	Height 290 mm, overall vane diameter 220 mm
Mounting sensor:	the sensor mounts on ø 20 mm pipe
Antenna input, receiver:	50 Ohm, SMA connector