

WIRELESS ANEMOMETER WR5/D



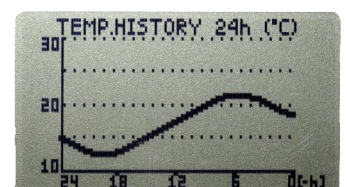
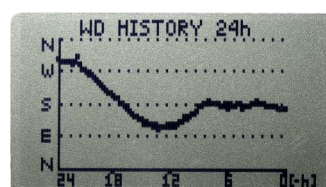
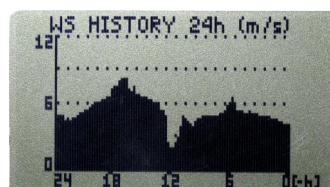
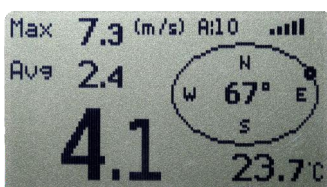
FEATURES

- easy installation without running cables
- shows all vital wind data
- range up to 500 m
- battery or external powered
- long battery life
- large, night illuminated LCD display
- compatible with range of NAVIS wind sensors
- wind tunnel calibrated

FUNCTIONS

- current, average and peak wind speed
- wind direction
- temperature and windchill
- history graphs - 24h wind speed, 24h wind direction
24h temperature; 1,5h wind speed
- max. wind speed sound and optical alarm

DISPLAYS





NAVIS

COMPATIBLE SENSORS:



WS 010-1A (standard range WS sensor)
 WS 011-1A (extended range WS sensor)
 WS 011-1S (extended range WS sensor, solar)
 WS 011-1A-EX (Atex certified WS sensor)

WSD 010-1A (standard range WSD sensor)
 WSD 011-1A (extended range WSD sensor)
 WSD 011-1S (extended range WSD sensor, solar)
 WSD 011-1A-EX (Atex certified WSD sensor)

ORDERING:

Display unit

1 **WR5/D** display unit

Sets with sensors included

- 2 **WR5/WS** display unit, standard range WS sensor
- 3 **WR5/WSD** display unit, standard range WSD sensor



1



2



3

OPTIONAL ACCESSORIES:

- 1 Long SMA antenna
- 2 Remote antenna with 3 m cable, magnetic mounting
- 3 YAGI antenna
- 4 MDMA/WR5 - Magnetic display mounting assembly
- 5 Protective transport case for set with wind speed or wind direction sensor



1



2



3



4



5



NAVIS

TECHNICAL DATA

Wind speed measurement range:	0,7...50 m/s
Current wind speed:	0,5 s, 1 s or 2 seconds update, depends from sensor settings
Average wind speed:	selectable averaging: 1, 5 or 10 minutes
Peak wind speed:	highest recorded current wind speed since reset
Wind speed alarm:	adjustable max. alarm (red light + sound signal, 83dB/10cm)
Wind speed resolution:	0,1 m/s
Wind speed units:	m/s, km/h, knots, mph
Wind speed accuracy:	+/- 2,5 %, calibration possible in 0,5% steps
Wind direction measurement range:	0°– 359°
Wind direction averaging period:	10 seconds
Wind direction accuracy:	+/- 2,5°, adjustable offset +/- 180°
Temperature measurement range:	-30...+60 °C
Temperature units:	°C, °F
Temperature resolution:	0,1°C
Temperature accuracy:	+/- 0,4°C
Temperature operating range:	-10...+50 °C
Communication frequency :	868 MHZ
Antenna connector:	SMA
Range, with standard range sensor:	up to 500 m visible distance
Battery:	3 x 1,5 V AA battery (not included)
Battery life:	up to 3.500 hours (without display illumination) up to 1.500 hours (with display illumination)
Externall power supply:	5 V DC
Externall power connector:	micro USB (adapter is not enclosed)
Casing:	ABS, 115 x 83 x 32 mm
Weight:	150 g